

Chapter 2 – General rules

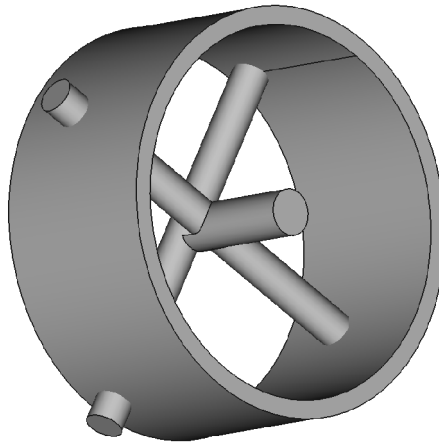
G. Exhaust pipes

1. All exhaust pipes must discharge vertically ($\pm 10^\circ$) and on turbocharged engines have a minimal wall thickness of 4mm steel up to the end of the security cross.

5. All turbocharged engines must have two 8mm steel rods through exhaust pipe as close to the turbo as possible with a maximum of 50mm. Rods have to be welded through the pipe and extend 5mm after the weld for easy inspection. Rods have to be installed 90° to each other, without any space between.

On the first rod from the turbo a rod of at least 10mm thick has to be welded on pointing to the turbo with a maximum of 2mm clearance to the turbo shaft.

(these security measures are to prevent the exhaust wheel leaving the turbo casing in case of a broken shaft)



S. Turbochargers

5. When the shielding is made of multiple parts they have to be mounted together with at least M6 8.8 bolts not more than 75mm apart and not more than 25mm from the ends. Parts need to overlap at least 25mm.